

# Mt Washington Care Center

231-4561



- ***24 Hour Skilled Rehabilitation and Nursing Services in Eastern Cincinnati, Anderson Township and Western Clermont County***

# Resident Care



It is the Philosophy of Mount Washington Care Center to maximize the quality of life for our residents. We are committed to preserving the dignity of every person we serve by effectively meeting his or her medical, social, emotional, and spiritual needs.



***Caring Is What We Do Best***

# Activities



- The goal of the Activities department is to help our residents have active, productive, and stimulating lives by making the most of what they are able to do.
- We offer an excellent variety of activities seven days a week.
- Our families and friends are invited to join us for all of our regularly scheduled activities, special events, and holiday celebrations.



# Volunteers



- Mount Washington Care Center always welcomes volunteers to assist with our many services that we deliver to our Residents.
- Please contact the Activities Director if interested.



# Social Services

- A Licensed Social Worker is available to all residents prior to and after admission.





# Rehabilitation

- Rehabilitation and restorative care are the cornerstones of the care provided at our facility.
- Mt. Washington Care Center has licensed therapists including: physical, occupational, speech, and respiratory therapy for our residents.
- We strive to maximize and improve each resident's functional abilities and encourage independence so that residents can return home to their families.





# Physicians



- Each resident admitted to a nursing home must be under the care of an attending physician licensed in the State of Ohio who is responsible for the continuous review of the health status of the resident.
- You are welcome to have the physician of your choice attend you at Mt. Washington Care Center. However, the physician must comply with all of the state, federal and Mount Washington Care Center regulations and policies and be willing to see the resident here.

# Nursing Services

- Mt. Washington Care Center offers professional nursing care 24 hours every day.
- The department is lead by a Director of Nursing on call 24 hours per day seven days a week.
- Supervised care is provided by a full staff of Registered Nurses and Licensed Practical Nurses licensed by the State of Ohio.
- The average length of service for our Nursing staff is over 16 years.
- Our professional staff is complimented by a full-time staff of state-tested nursing assistants.
- The care provided at Mt. Washington Care Center is regulated and monitored on a state and federal level, and surveyed annually by the Ohio Department of Health.





# Beauty/Barber Shop

- A licensed cosmetologist is available Monday 9:00 a.m. – 5:00 pm and Friday 9:00 a.m.- until all work is finished
- Should you wish to make an appointment, please stop by the Beauty shop, Business office, or check at the nursing station.
- Prices are posted at the salon.



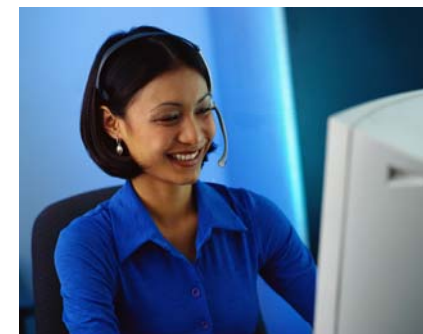
# Nutritional Care Services



- A licensed dietician plans all meals.
- Special diets are available per physician order.
- All meals served at Mt. Washington Care Center are traditional American foods. Meats, potatoes, vegetables, cookies, cakes and ice creams for desserts.
- Meal time is a good opportunity to make new friends. We encourage our residents to eat in the main dining room.
- Families and friends are also welcomed to join us for a nominal fee.



# Contact Us



## **Mount Washington Care Center**

**6900 Beechmont Ave**

**Cincinnati, Ohio 45230**

**513-231-4561**

**1-800-414-2316**

**Fax 513-624-3728**

**[www.mtwcc.com](http://www.mtwcc.com)**

# **Caring Is What We Do Best**

# Other Services

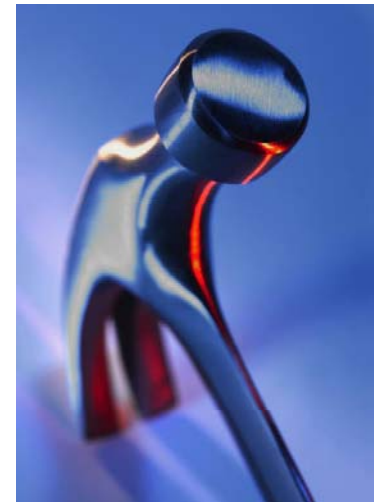
- Podiatry
- Ophthalmology
- Audiologist
- Dentistry
- Psychiatry
- Psychologist
- Free Cable TV
- Telephone



# Environmental Services



Housekeeping and Maintenance compliment our other departments by keeping the interior and exterior of our building clean and safe.



# Financial Information



## Mt. Washington Care Center:

- Medicare Certified
- Medicaid Certified
- Preferred Provider for most Insurance companies
- Private pay billing
- Bills all secondary insurances



# Admissions

- Admissions to Mt. Washington Care Center occur 24 hours a day 7 days a week from area hospitals, medical facilities or from home.
- Please contact the admissions office at 231-4561 ext. 213 or email [admissions@mtwcc.com](mailto:admissions@mtwcc.com) for specific questions about admitting a loved one into the facility and to check availability.

